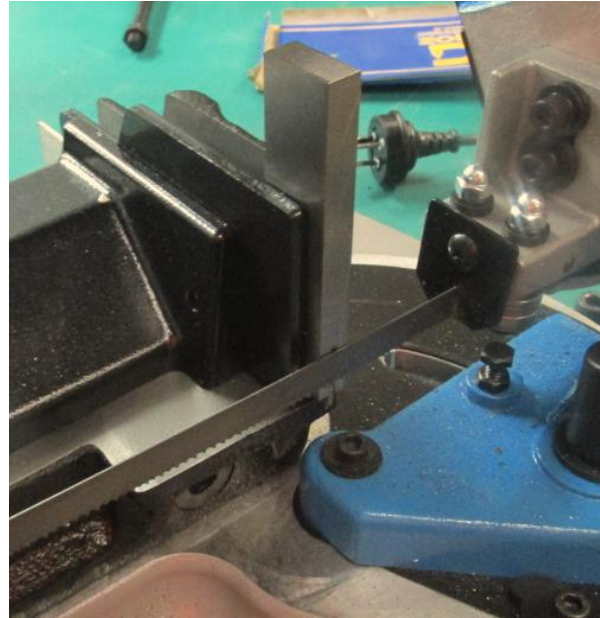
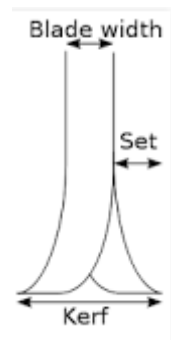


# First - check blade FALL is the problem by loosely putting an engineer's square in the vice and dropping blade from top to bottom of square. Blade should fall with the same distance on the top of square as to the bottom of the square as below

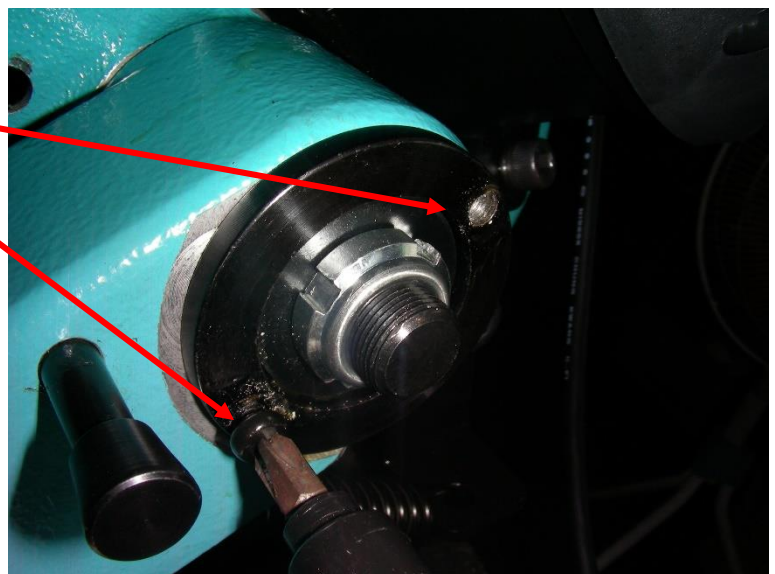


If it does FALL "Square", then the following adjustment is not needed and "other problems" will be the cause such as blade not square to cut fall (Adjust blade guide blocks) or blade faulty ( maybe teeth "Set" worn off one side of the blade )

If blade does not "FALL" correct, then the bandsaw has adjustment in the "Arm Pivot, Adjustment Ring" To adjust this



# Remove the 2 Self Tappers out of the eccentric outer adjustment ring of the bandsaw arm pivot shaft.

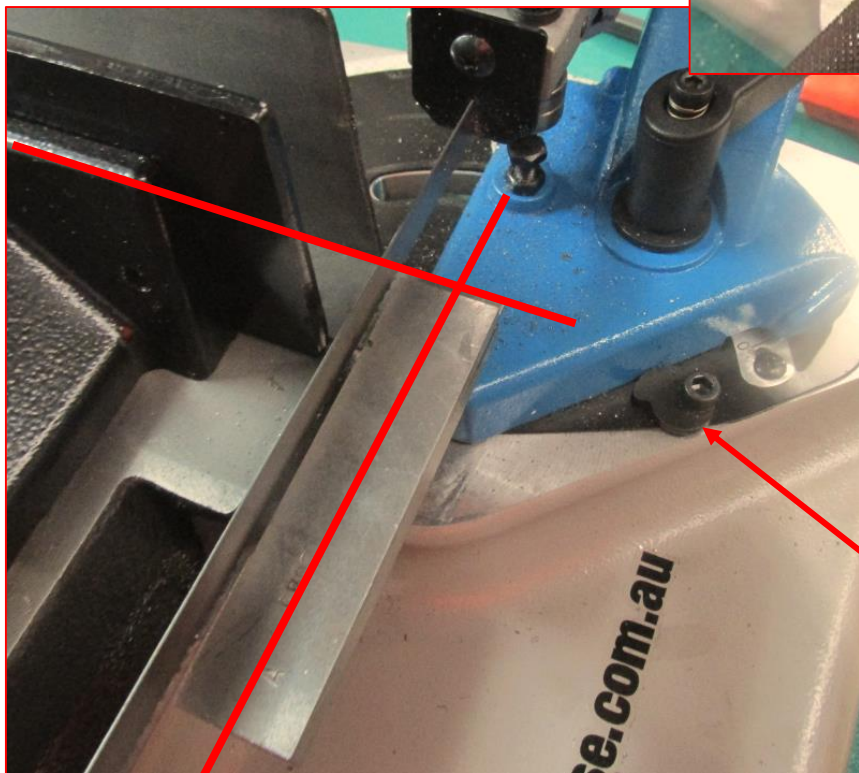
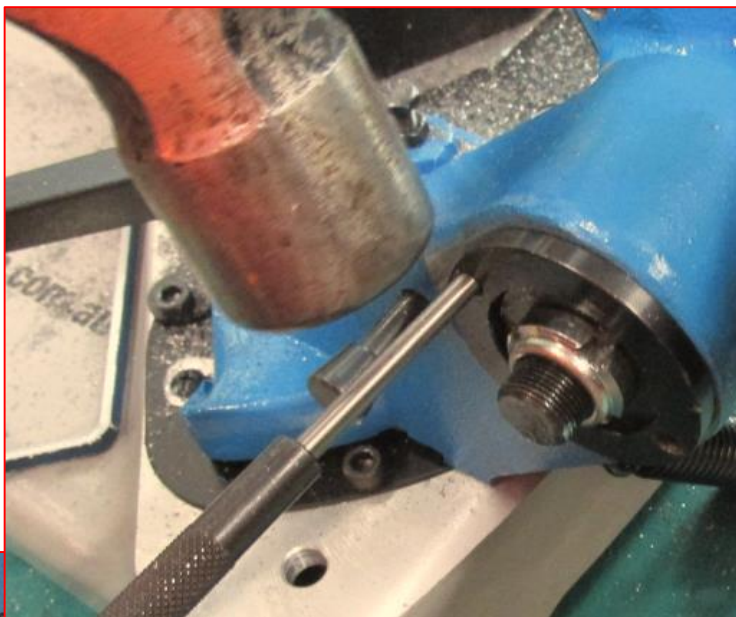


# The adjustment ring can now be turned with the aid of a pin punch and hammer. (it may be tight!) Turning the ring will adjust the outer ring of the bearing inside it, up or down as needed, so lifting or dropping the pivot pin on this end and adjusting squareness of cut to vice base.

The direction to turn the ring can not be advised and trial and error will be needed to get arm drop correct.

# When set correct, the 2 x Self tappers can be put back in.

First drill 2 holes 3.8 to 4.0mm dia into casting through holes 8mm deep and refit the screws.

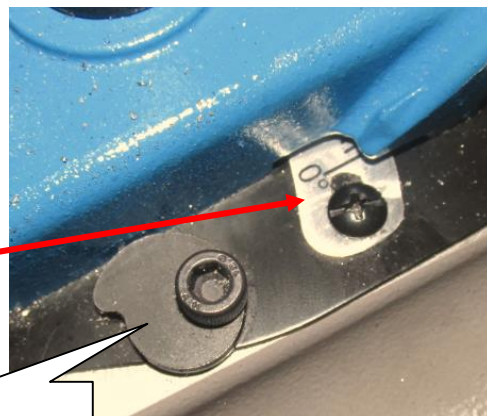


# Check the blade Squareness to the rear vice fixed jaw and adjust if needed as this may now be out due to previous adjustment.

Hold Engineers Square as shown lightly in vice.

Bring blade down to it to check if blade is parallel to square body.

Adjust as needed by resetting the "Zero stop cam" until blade is parallel to square



Then "Reset" the angle tape by loosening the screws each end of it and sliding it were needed so "0" is under the line on swivel casting then retighten its two screws

Zero Stop cam